

Lang's gallery

Feature pages reserved for displaying the work of emerging and developing Australian artists; as well as other unknowns whose efforts may provide interest for our readers.



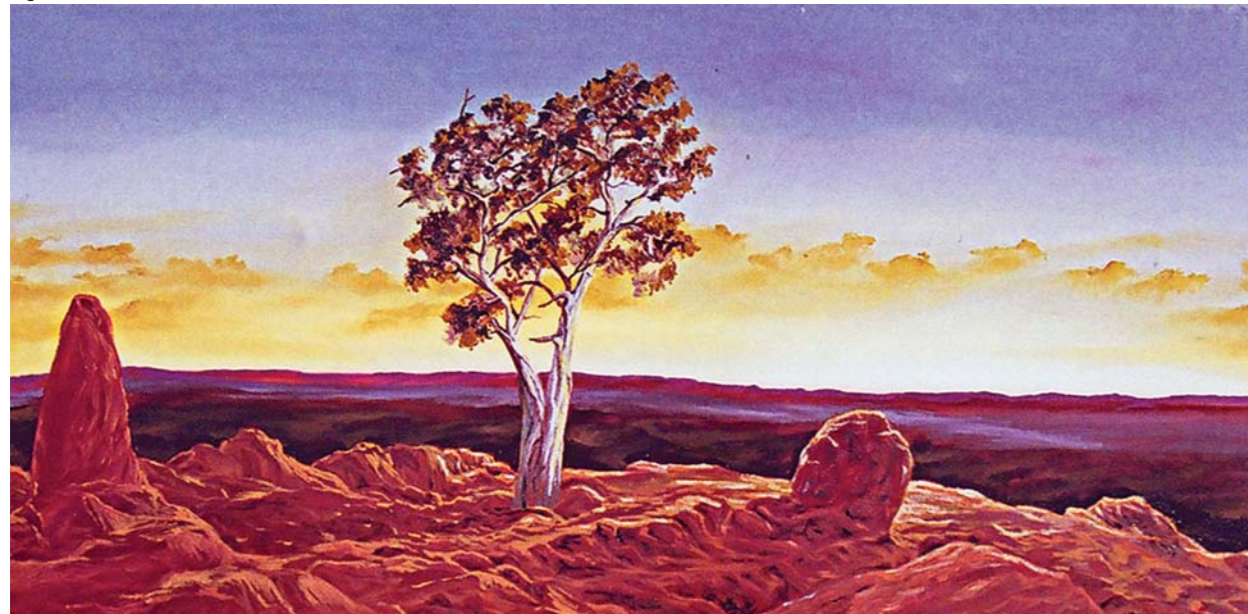
ARTIST'S PALETTE magazine seeks to showcase the works of talented Australians producing art at a whole range of skill levels, whether they are accomplished creative people with a long history of achievements or beginners (of all ages) striving to build their identities and reach their particular artistic goals.

This new 'Gallery' page provides a place to display pictures by people who may not have the means or the opportunity to be extensively featured in our magazine. Submissions are sought from such people for future Issues.

This month I am pleased to display some work by Jamahl Pollard – two of his almost surreal paintings themed on Nature. Jamahl is a vision impaired artist working in Adelaide. Although he is classed as 'legally blind', he uses his passion for art to take the 'dis' out of 'disability'. He has a steady flow of commission work, and exhibits his paintings at several Adelaide galleries. He also has a website displaying more of his works: www.4dart.com.au



by Jamahl Pollard



Joyce Hopwood

Also displayed here is some work by Joyce Hopwood of Kyneton in Victoria. Joyce has only been painting for a few short months, under instruction from Ray Ellis who was a featured artist in this magazine earlier in the year. She paints as a hobby, but hopes to soon reach a standard when she can begin to exhibit her works.



If you are a developing artist and would like to see your own work in Lang's Gallery, please send me a good quality colour photograph of the painting you want to display in the magazine. If you would like to, you may include a photograph of yourself to accompany the picture of your art. Please also supply a brief written description of your background, your creative motivation, and your artistic aspirations.